

TRIP REPORT FORM

AGGIE SPELEOLOGICAL SOCIETY

DATE: August 18-20

STATE: Texas

SPECIFIC AREA: Lost Lead of Legends

TEAM LEADER: Jenna Crabtree

TEAM MEMBERS: Caleb Crubaugh, Alex LeGresley, Russell Oplinger, Josie Shaw, Ben Walker

TIME ENTERED: 10:45pm- August 18

CAVE: Whirlpool

COUNTY: Travis

EXIT TIME: 1:15 am- August 20

PURPOSE OF THE TRIP

Continue to push leads in the Lost Lead of Legends. First chance for our members to experience expedition style caving.

BRIEFLY DESCRIBE YOUR TRIP AND ANY SPECIAL OBSERVATION

Ben, Jenna, Josie, and Russell all met in the Walmart Parking Lot a little after 3pm. The group headed towards Austin after fueling up on drinks from Sonic. The group stopped to gather some tools from Drew Thompson and a Disto from Crash Kennedy. We are oh so thankful for their willingness to support our caving efforts! We also took a detour to REI, food trucks, and Congress Avenue Bridge to watch the bat flight. After the bat flight we stopped at a local Walmart for last minute supplies and met up in the Whirlpool parking lot with Alex and Caleb about 9:30 pm.

The group began getting dressed and shuffling bags towards the Whirlpool entrance. We entered the cave about 10:45 pm. We used a daisy chain method to pass bags from one another until we reached the Millinium Falcon room where we decided to make camp. Due to the excitement of our group we immediately made our way to the Lost Lead of Legends and got to work. Caleb and Russell began attacking the left lead, I started working in the Ectasy of Gold Chamber and Alex, Ben, and Josie continued work on widening the entrance into the Ectasy of Gold Chamber. We headed back to base camp at roughly 2am.

We set up large tarps throughout the M.F. Room to place our sleeping pads and sleeping bags on. We designated the entrance chamber as the bathroom and stockpiled burrito bags and piss bottles in a corner. Once everyone had their sleeping area situated the

group quickly got to work eating and laughing. Everyone was tucked in for a sleepless night by roughly 4am.

At what I assumed to be 9am I woke the group up. We began the slow process of wiping the sleep from our eyes, bathroom breaks, and cooking breakfast. Caleb was the first to head back to work and we could hear the faint sound of a drill passages away. Russel followed soon after. Ben, Alex, Josie, and I followed soon after and returned to our work on the right lead.

The Ectasy of Gold Chamber is trending East to West with its lead trending North West from the Pancake Room. There is an ununiform 7 inch gap that we focused on widening. We removed about 10 sand bags of rock from the chamber and placed them along the edges of the Pancake Room. Alex, Ben, and Josie removed about 6 inches from the rock shelf that was making it difficult to enter the chamber and about 1 foot of mud. We still have not made our way out of the Ectasy of Gold Chamber.

The lead Caleb and Russel worked on looped back to the main passage roughly 160 feet before entering the Travis County Room. Caleb estimates that there is about 40 feet of passage added to Whirlpool via his and Russell's effort.

I marked stations from the main passage through the talus crawl to the Pancake room for future survey efforts. Alex and Josie got frontsights and backsights for the crawl which I will sketch at a later date. We decided against surveying because we had accomplished so much in our time and didn't want to rob ourselves of future project caving trips. I also admittedly had been a bit under the weather the week before and decided the mental and physical fatigue was enough that my sketch would suffer.

After spending so much time in Whirlpool we gathered at base camp once again to regroup and rest. The Sunday Scaries had begun to invade our brains and plant seeds of anxiety and despair. Content and proud of the work we accomplished we decided to pack up and head home. Utilizing a reverse daisy chain method we soon found ourselves on the surface at roughly 1:15 am.

After changing clothes and sorting gear Alex, Caleb, Josie, and Russell made a bee-line for College Station. Ben and Jenna drove the tools and disto home to their parents after a wild weekend and ended up in College Station around 4am.

We look forward to the opportunity to return to Whirlpool to continue our efforts in the Ectasy of Gold chamber and to survey the new passage we have found.



Alex squeezing the “booty scoot” through a Whirlpool restriction. Photo by Jenna Crabtree.



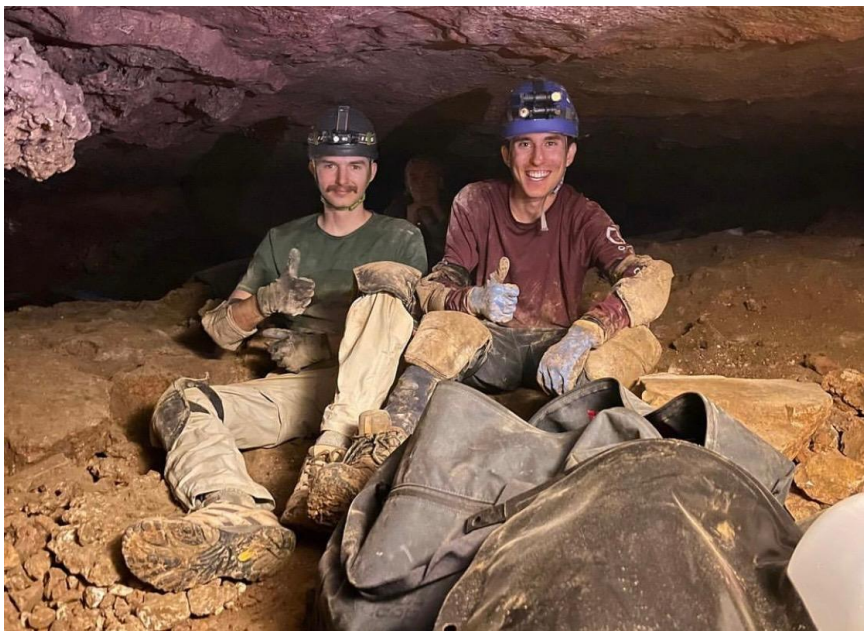
Bags in the second chamber being shuffled to our rest area. While it might not be what you typically see on expeditions this is the best representation of *college kid Walmart caving*. Photo of Jenna Crabtree.



Alex digging on the right lead of the Pancake Room. Photo by Jenna Crabtree.



After Whirlpool aftermath. Left to Right: Alex L., Ben W., Jenna C., Caleb C., Josie S., Russell O.



Russel O., Josie S., and Alex L. smiling for a quick photo snapped by Ethan Perrine of Underground Texas Grotto. Ethan and a small group surprised us Saturday afternoon in the cave.

The dig on Lost Lead of Legends (All pictures taken by Caleb Crubaugh):



Start of Lead passage.



Start of primary digging spot. The passage goes up out of sight.



This is the left side of lead that was dug out. The camera is looking up.

There is a large loose rock in the upper right part of the passage. This passage goes up about 6 ft. from lead passage.



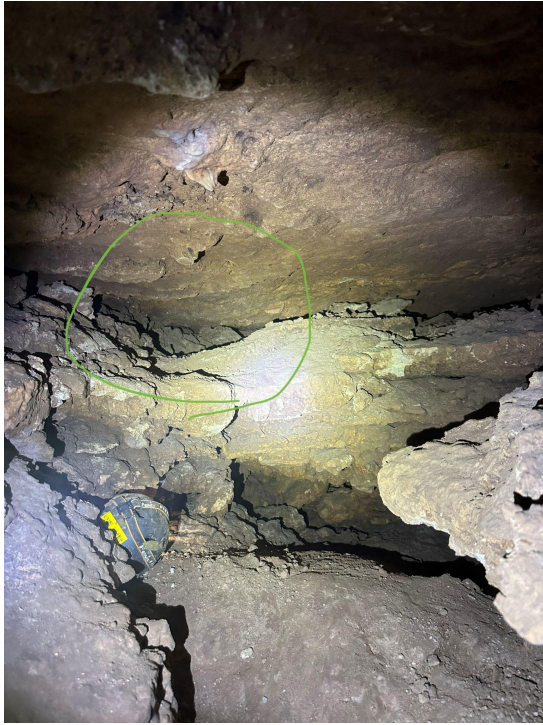
This is the lead to the right side of the start of the dig that is at the same level as the lead passage. My phone case is on the ground showing that it is only a few inches tall. It also has a lot of rock to remove to dig it out. It is probably not worth pursuing.



This is the upper lead passage that was dug out. Height is 15 inches from floor to ceiling in most places.



This is a photo taken of the right side lead. It looks like it could continue to the right beyond the wall seen, but digging would be very difficult due to the rock present and the low height.



This is the passage I dug out of.
Where I am taking the picture the
passage goes down 15 feet to a wet
crawl that leads to the Travis County
Room.