

JEOPARDY!

BNCs and BNCs

Jenna Crabtree
President
Aggie Speleological Society

Jeopardy with a twist regs:

1. Each group will pick *one* speaker to present their questions for the *final review*
2. Players/teams will answer with questions.
 - a. This TAMU Organization is the only underground one of its kind
 - b. “Who/What is ASS”
 - c. Any grammatically coherent question with the correct answer within it counts as a correct response
3. We will go in alphabetical order of team names.
4. A person cannot win due to an incorrect answer by an opponent. The player must win off a correct answer.
5. An incorrect answer or failure to respond in one minute will result in the deduction of the clue’s value from that teams score and the next team in order will be given a chance to answer up to 3 times before the clue is retired.
6. The team with the most points at the end wins!

BNCs and BNCs

FINAL JEOPARDY

Man Cave

Women
Power

Expiration

American

International

\$100

\$100

\$100

\$100

\$100

\$200

\$200

\$200

\$200

\$200

\$300

\$300

\$300

\$300

\$300

\$400

\$400

\$400

\$400

\$400

\$500

\$500

\$500

\$500

\$500

Man Cave - \$100 Question

What Texas based caver was on the first episode of *Dirty Jobs with Mike Rowe*, worked for BCI for over 10 years, is the founder of Gate Gators (a bat gate company), and is an officer for Texas Cave Management Association and Texas Speleological Society?

Bonus: Is the dad to a future ASS President

[Click to see answer](#)



Man Cave - \$100 Answer

Jim “Crash” Kennedy



[Click to return to Jeopardy Board](#)



Man Cave- \$200 Question

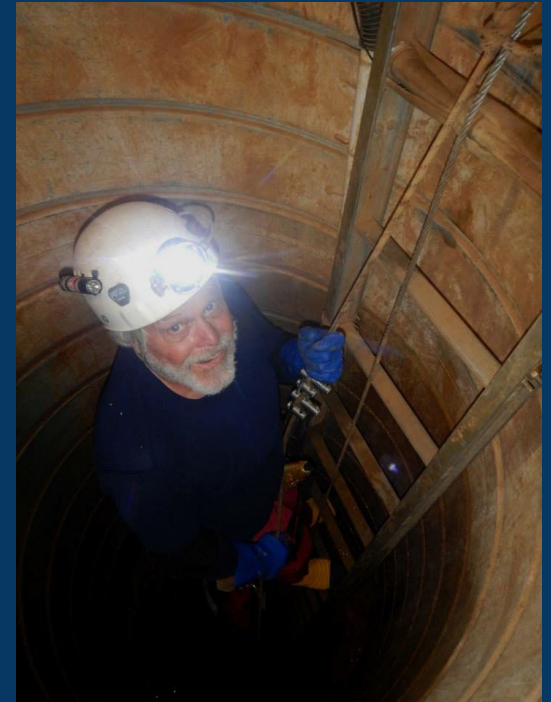
What Texas based caver is known for co-leading the efforts of PESH, is a member of the Explorer's Club, and had an extremely noteworthy career with the Boy Scouts of America?

Click to see answer



Man Cave - \$200 Answer

Bill Steele



[Click to return to Jeopardy Board](#)



Man Cave - \$300 Question

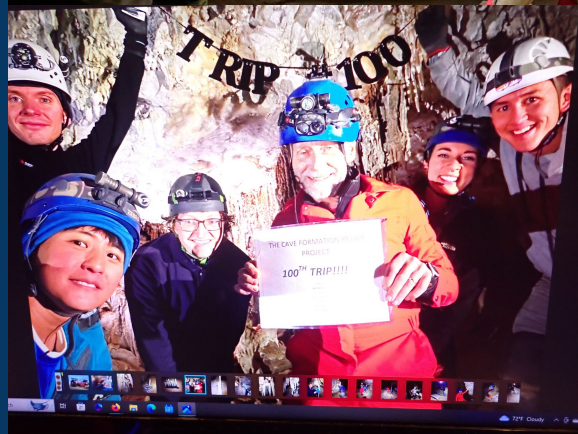
What New Mexico based caver is the founder of the Cave Formation Repair Project, an honorary member of the Aggie Grotto, a former Powerlifter, and is just the coolest dude you've ever met in your whole life?

Click to see answer



Man Cave - \$300 Answer

Mike “THE MAN” Mansur



[Click to return to Jeopardy Board](#)



Man Cave - \$400 Question

What New Mexico caver is a regular volunteer at Carlsbad Caverns National Park, a recognized cave photographer, and is called “*Cave Mom*” by his former student grotto?

Click to see answer



Man Cave - \$400 Answer

Hunter Klein



[Click to return to Jeopardy Board](#)



Man Cave - \$500 Question

What South Dakota bred but TAG based cave photographer has been published multiple times in NSS magazines, has won multiple NSS salon awards, and uses Ellison's as a project cave with his brother?

Bonus: His nickname is worm and he is a Nursing student at the University of Alabama in Huntsville, AL

Click to see answer



Man Cave - \$500 Answer

Ethan Reuter



[Click to return to Jeopardy Board](#)



Women Power- \$100 Question

Who has a doctorate in biology, is a roller derby queen, is the Conservation Research Program Coordinator for BCI, and recently helped publish *The State of the Bat Report*?

Bonus: She is a former ASS advisor

Click to see answer



Women Power - \$100 Answer

Amanda Adams



[Click to return to Jeopardy Board](#)



Women Power - \$200 Question

What originally Texas based caver is known for her expedition caving and premieres in the *Deepest Cave* where she assists on major logistics of the Cueva Cheve expedition?

Click to see answer



Women Power - \$200 Answer

Bev Shade



[Click to return to Jeopardy Board](#)



Women Power - \$300 Question

What female caver has her doctorate in Theoretical Particle Physics from UC Berkley, is a proficient cave diver, a notable Cueva Cheve expedition attendee, and is known for her expedition caving?

Click to see answer



Women Power- \$300 Answer

Gilly Elor



[Click to return to Jeopardy Board](#)



Women Power - \$400 Question

What female caver is now New Mexico based (originally from Texas) and is the Education Program Manager for the National Cave and Karst Research Institute in Carlsbad, New Mexico?

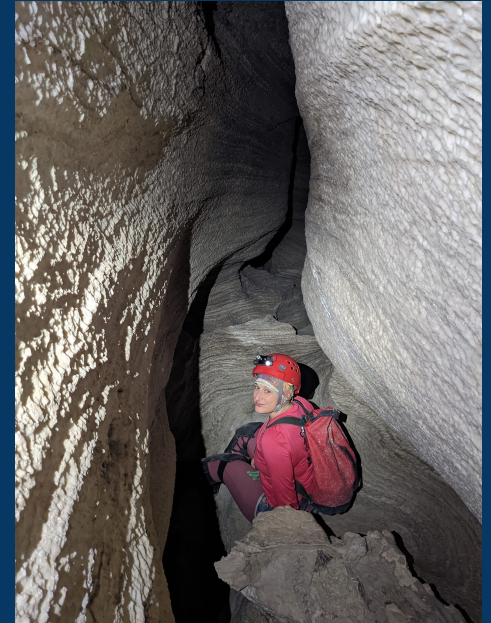
Click to see answer



Women Power - \$400 Answer



Devra Hayer



[Click to return to Jeopardy Board](#)



Women Power - \$500 Question

What female caver is best known for her clear and digestible sketching efforts in Lechuguilla and the Mammoth cave system, international survey efforts focused primarily on lava tubes, is a professor at Western Kentucky University, and is an award winning cave cartographer?

Click to see answer



Women Power - \$500 Answer

Pat Kambesis



DR. PATRICIA KAMBESIS
GEOLOGIST, CAVE RESEARCH FOUNDATION

[Click to return to Jeopardy Board](#)



Expiration - \$100 Question

What American caver was recently credited with saving Mark Dickey's life in a Turkey cave rescue due to her speed on rope?

Click to see answer



Expiration - \$100 Answer

Jessica Van Ord



[Click to return to Jeopardy Board](#)



Expiration - \$200 Question

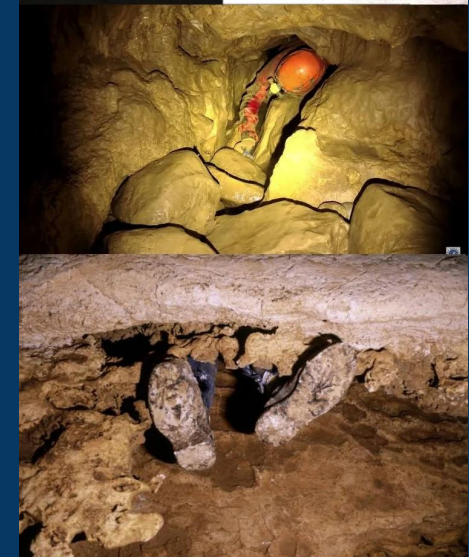
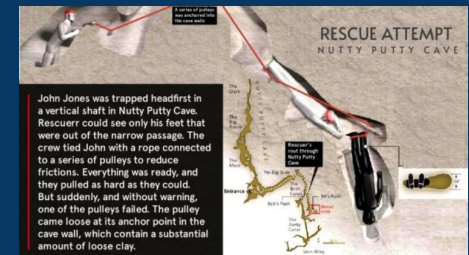
What cave in Utah has been famously a tomb since 2009?

Click to see answer



Expiration - \$200 Answer

Nutty Putty Cave



[Click to return to Jeopardy Board](#)



Expiration - \$300 Question

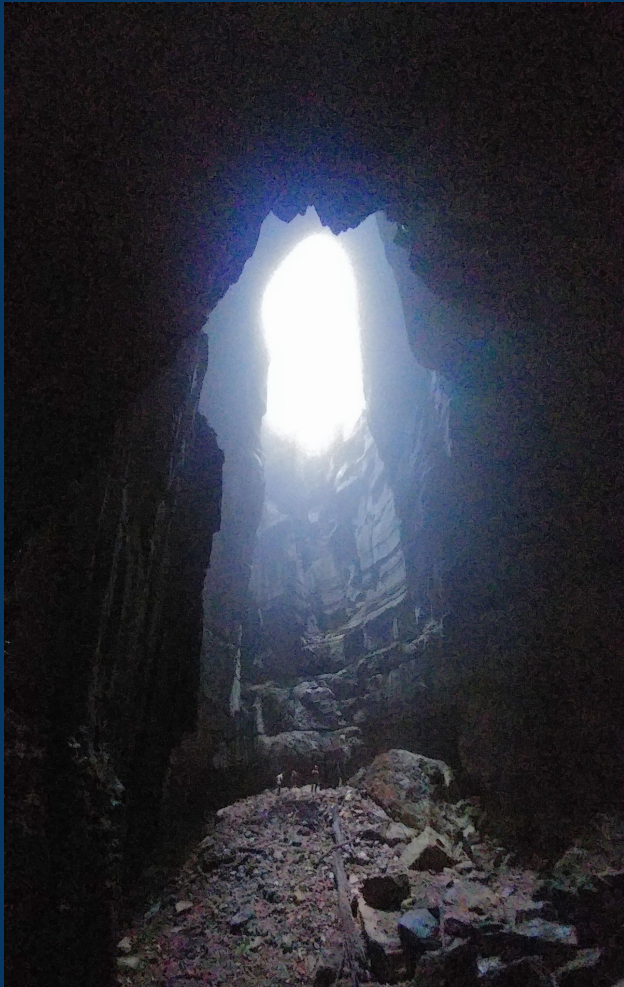
What SCCI managed cave bears an ominous name and is credited with 3 known caver fatalities and features a 227 foot drop?

Click to see answer



Expiration - \$300 Answer

Valhalla



Click to return to Jeopardy Board



Expiration - \$400 Question

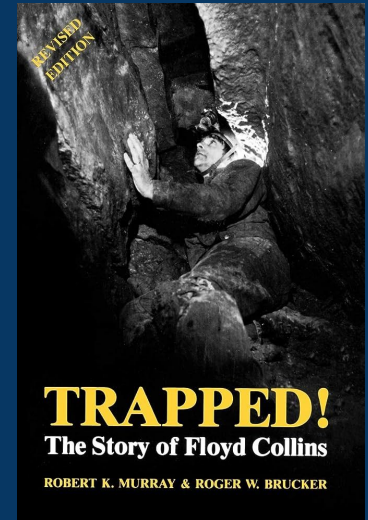
What cave is located within the boundaries of Mammoth Cave National Park, was the tomb of Floyd Collins until the park relocated it to a local cemetery due to multiple grave robberies, and has the associated phrase *“Free Floyd Collins”*?

Click to see answer



Expiration - \$400 Answer

Sand Cave



[Click to return to Jeopardy Board](#)



Expiration - \$500 Question

What cave in New Zealand claimed 14 lives via platform collapse in the 1990s?

Click to see answer



Expiration - \$500 Answer

Creek Cave

<https://www.youtube.com/watch?v=ICou-8mdP2M>



Click to return to Jeopardy Board



American - \$100 Question

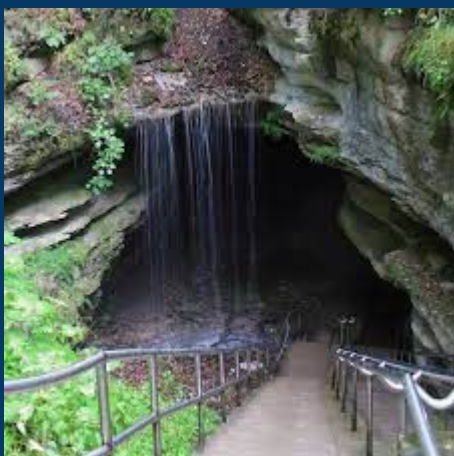
What is the longest cave in the world?

Click to see answer



American - \$100 Answer

Mammoth Cave



[Click to return to Jeopardy Board](#)



American - \$200 Question

What American cave is credited for having 90% of the world's known boxwork?

Click to see answer



American - \$200 Answer

Wind Cave



[Click to return to Jeopardy Board](#)



American- \$300 Question

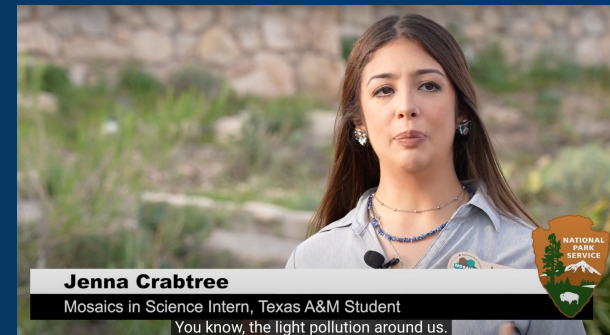
What cave in America has a National Park named after it and is a UNESCO World Heritage Site while boasting one of the top 10 longest caves in the world?

Click to see answer



American - \$300 Answer

Carlsbad Cavern



Click to return to Jeopardy Board



American - \$400 Question

What cave is famous for its
Snowy River which is
considered to be the longest
Speleothem in America?

Click to see answer



American- \$400 Answer

Fort Stanton Cave

<https://www.youtube.com/watch?v=av4Y-5SYEfc>

FORT STANTON - SNOWY RIVER CAVE NATIONAL CONSERVATION AREA



The bed of Snowy River is covered with bright white calcite. Over time, ancient, slow moving ground water dissolved the limestone walls of the cave and, with the help of microorganisms, recrystallized limestone into the white-colored mineral. Since prehistoric times, ground water saturated with dissolved calcite has periodically flooded the cave, followed by extended periods of dryness, leaving behind coatings and deposits. Fort Stanton Cave, now including the Snowy River Passage, contains the fourth largest cave footprint in the USA. The Bureau of Land Management reports that Snowy River may be the largest continuous cave formation in America.

Click to return to Jeopardy Board



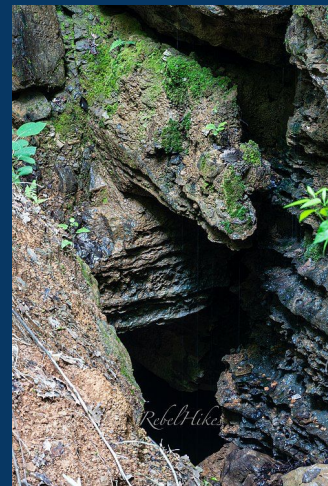
American - \$500 Question

What cave famously features
3 pits over 400 feet deep?

Click to see answer



American - \$500 Answer



Ellison's Cave
Incredible Pit - 440 ft
Fantastic Pit - 586 ft
Smokey I Pit - 500 ft



[Click to return to Jeopardy Board](#)



International - \$100 Question

What cave is currently the deepest in the Western Hemisphere?

Click to see answer



International - \$100 Answer

Cueva Systema Huatula, Mexico



[Click to return to Jeopardy Board](#)



International - \$200 Question

What cave is known for having its own weather and biome?

Bonus: It is also considered the largest cave in the world

Click to see answer



International - \$200 Answer

Son Doong Cave, Vietnam



[Click to return to Jeopardy Board](#)



International - \$300 Question

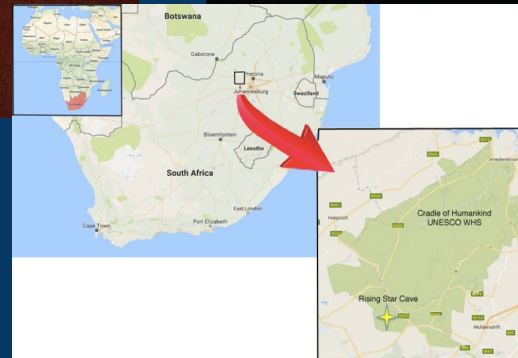
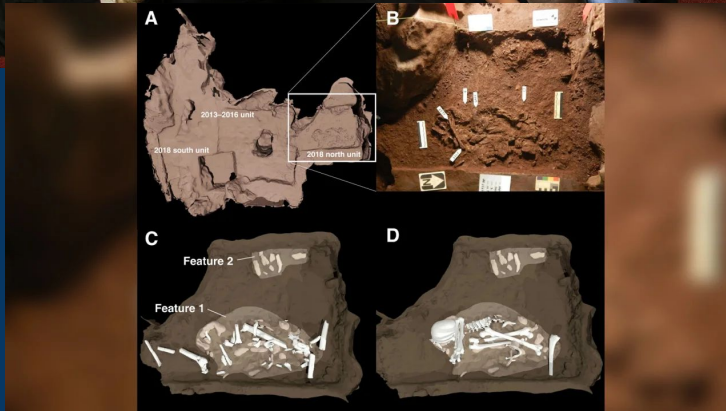
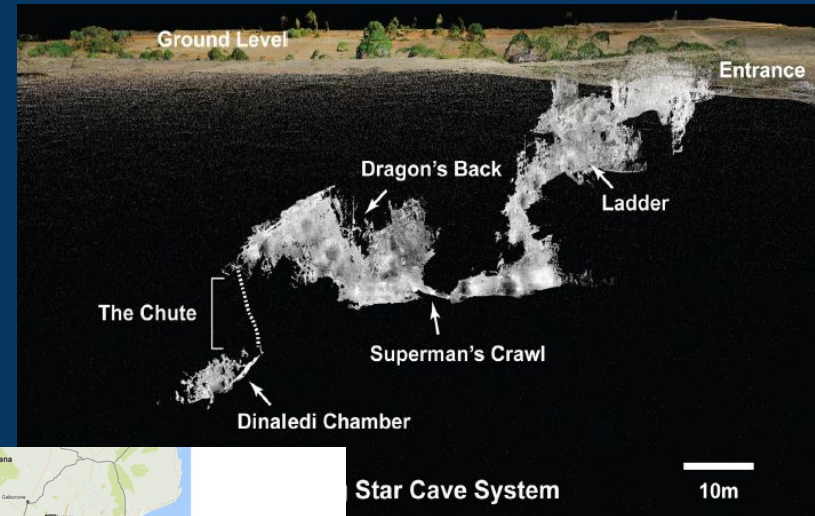
What cave has been recently found to hold *homo naledi* skeletons and predates any known *homo sapien* burial by 100,000 years?

Click to see answer



International - \$300 Answer

Rising Star Cave System, South Africa



[Click to return to Jeopardy Board](#)



International - \$400 Question

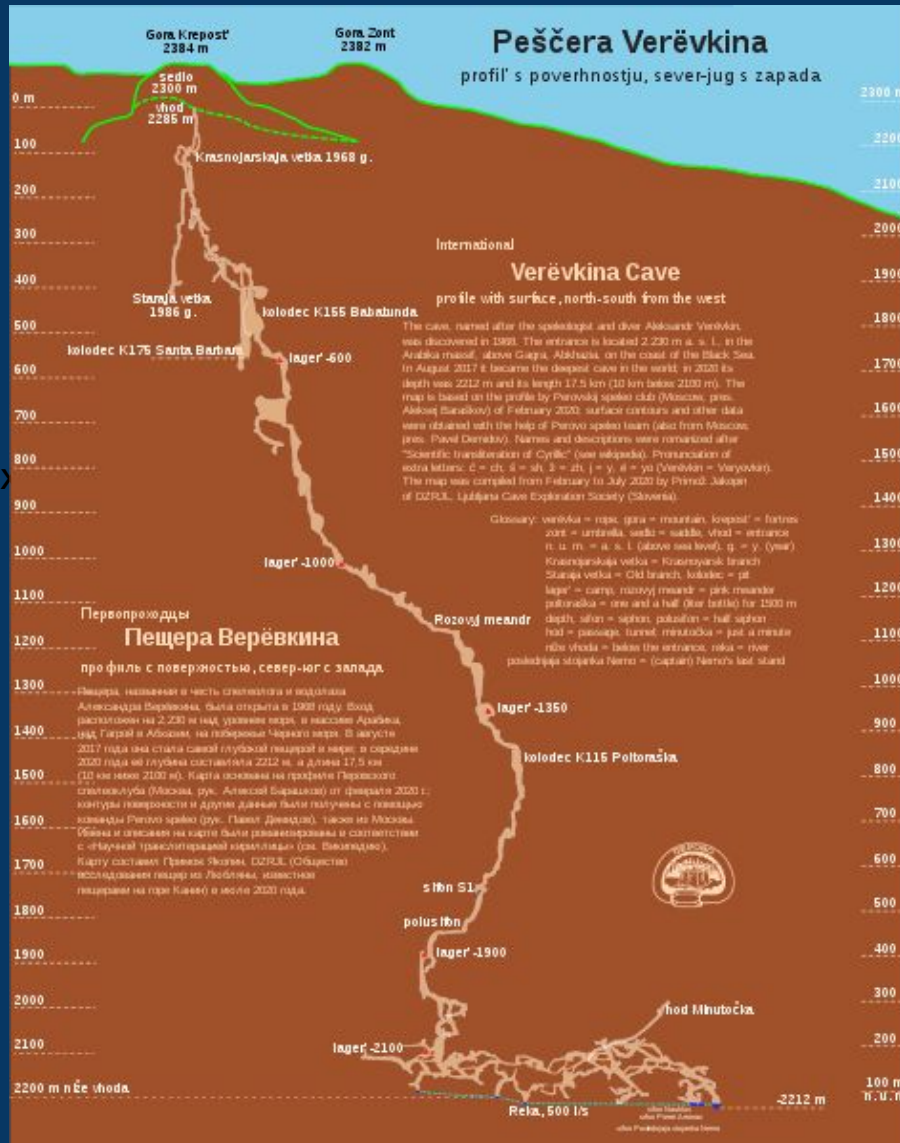
What is the deepest cave in the world?

Click to see answer



International - \$400 Answer

Veryovkina Cave 2223 meters 17.5 km Georgia



[Click to return to Jeopardy Board](#)



International - \$500 Question

What cave in Southwestern France has been closed to the public since 1963 due to the deteriorating condition of wall art dated at 17,000 years old depicting large animals and fauna?

Bonus: A copy of this wall art is in Lost Cave in Carlsbad, New Mexico

[Click to see answer](#)



International - \$500 Answer

Lascaux Cave



[Click to return to Jeopardy Board](#)



FINAL JEOPARDY!

Topic: Anti-Heroes

Click to see question 

Final Jeopardy Question

What caver originally worked in a dead-end fast food job before they began caving, only to be pulled into a lab and gifted a scholarship to a university from another BNC after they lucked into an NSS Internship?

Bonus Hint: She claims to be featured in *The Deepest Cave* documentary but was cut out due to inappropriate commentary. “Ok”.

Click to see answer



Final Jeopardy Answer

Reilly? Riley? Rail Me?
Blackwell

[Click to return to Jeopardy Board](#)



ANNOUNCEMENTS:

Past, Current, & Future ASS



Powell's:

- 20 grotto members went to Menard County, Texas to visit an Aggie Grotto classic- Powell's Cave
- Much above ground silliness transpired
- Much more underground seriousness and awesome caving transpired

Cute!



*Aggie Grotto "Salamander" group at Powell's gate
Photo by: Yuchen Yang*

Stars went brrrr



Stars in Menard County, Texas
Photo by: Yuchen Yang

NEAT!



*Alex Legresley dropping the pit next to Powell's
Photo by: Jakob Denton*

We are going back to Powell's!

- Oct. 20-22
- Come to meetings for signup!

Vertical Trainings!

- Link to Signupgenius is still pinned in the groupme!
- If you wanna do cool rope stuff come get trained



TCR!

- Signups are live now!
- Hosting Speleo-lympics
- Oct. 12-15th
- We will be leaving after classes!
- Best new caver award being presented



That's a Wrap!

